

LAKEVIEW AVENUE OVERCROSSING



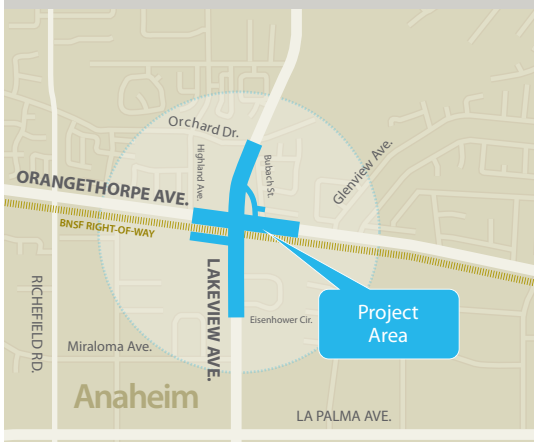
O·C·BRIDGES

Improving safety. Removing delays.

AT A GLANCE

PROJECT COST:	\$70.2 million
FUNDING:	\$32.1 million Federal \$28.7 million State \$9.4 million Measure M2
CORRIDOR CITIES:	Anaheim, Fullerton and Placentia
COMMUNITY OUTREACH:	Tresa Oliveri 714/560-5374 ocbridges@octa.net
WEBSITE:	www.ocbridges.com
FACEBOOK:	facebook.com/ocbridges
TWITTER:	twitter.com/ocbridges

Updated, 06/05/13



OCTA will reconstruct Lakeview Avenue as a bridge to allow vehicles to pass over the Burlington Northern Santa Fe Railway. As part of the project, Lakeview Avenue will be raised to separate car traffic from train traffic. The overpass will be built from approximately 200 feet south of Orchard Drive to 150 feet south of Eisenhower Circle.

During construction, Lakeview will be elevated and realigned to pass over the railroad tracks. A ramp connecting Lakeview to Orangethorpe will be constructed, and North Bubach Street in the northeast corner of the project area will be rerouted to connect to the ramp with a new signalized intersection. A new frontage road will be built in the southeast corner of the project for local business access. A new road also will be built in the southwest corner to connect the new frontage road to Lakeview.

Access to the Lakeview Business Park will be maintained during the project with a single entry/exit at Eisenhower Circle, along with a new traffic signal.

CONSTRUCTION SCHEDULE

Construction of the Lakeview Avenue overcrossing is expected to start in early 2014 and be completed by early 2016. Work is scheduled so that adjacent crossings are not closed to drivers at the same time, and OCTA is working to reduce the effects of construction on the community. Some night work is anticipated throughout the project.

SAFETY: OCTA'S TOP PRIORITY

OCTA's highest priority is safety for its project workers and the public. During construction, please:

- Slow down and watch for workers and equipment
- Allow extra time to get to work, school and appointments
- Be extra careful when driving at night and in rainy weather
- Avoid use of mobile phones or other distractions
- Watch for closures and follow detours
- Be patient. Remember that this is a short-term inconvenience for a long-term traffic solution.

PROJECT / MAJOR MILESTONS

- Build new frontage & access road for businesses between Orangethorpe and Atwood channel.
- Close Lakeview / Orangethorpe intersection
- Build new bridge structure over BNSF
- Build connection from Lakeview to Orangethorpe with new neighborhood entrance to Bubach St.
- Construct walls and roadway from new bridge back to grade on Lakeview

PROJECT BENEFITS

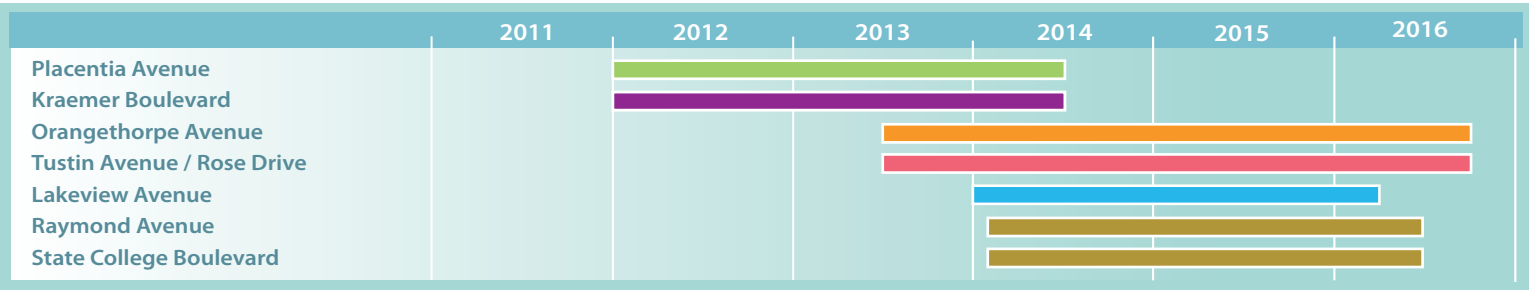
- Greater driver/pedestrian safety
- Shorter emergency response times
- Elimination of delays
- Easier business access
- Enhanced economic vitality
- Improved air/noise conditions
- Better quality of life



Orange County Transportation Authority

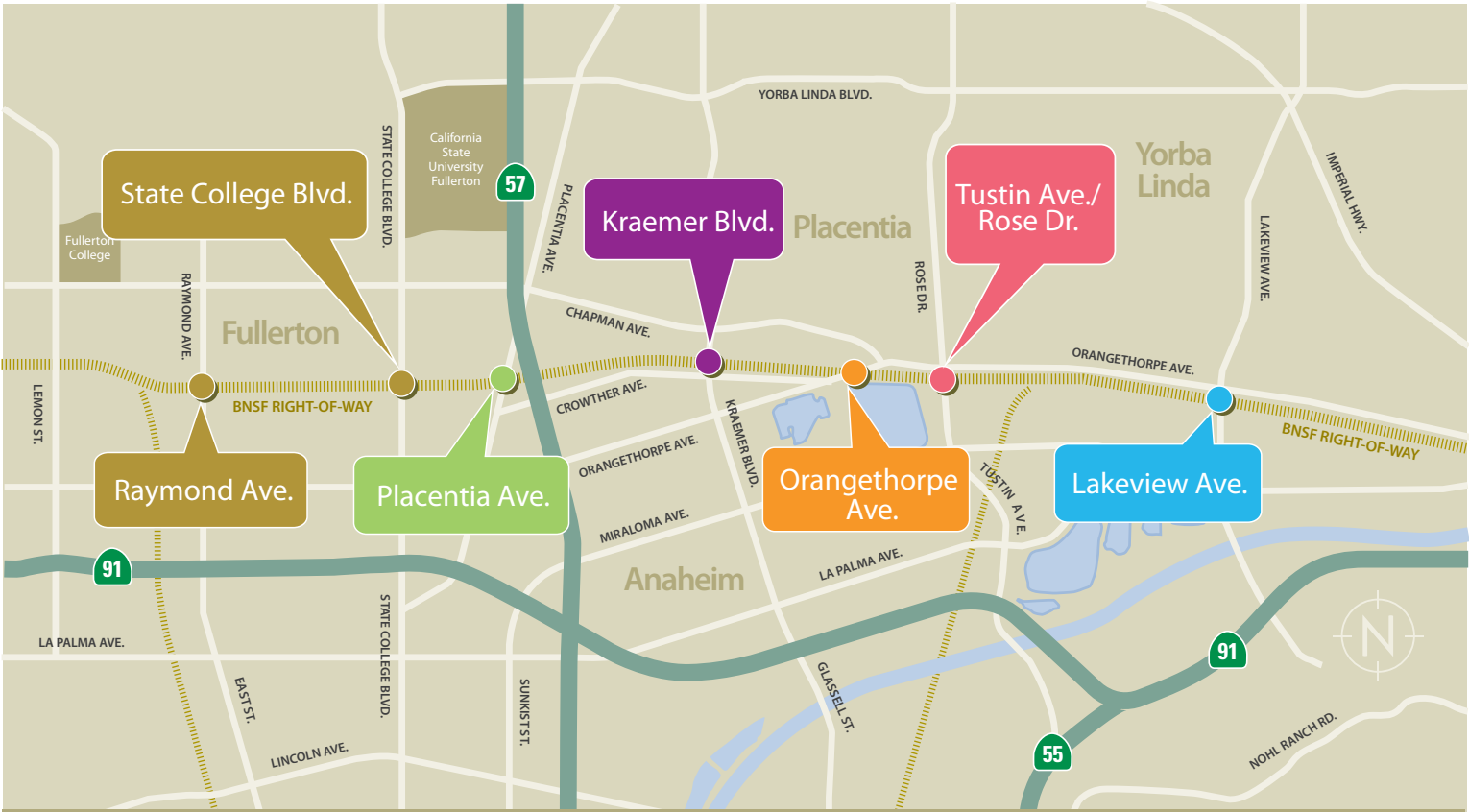
550 S. Main Street
P.O. Box 14184
Orange, CA 92863-1584
(714) 560-OCTA
www.octa.net

ANTICIPATED CONSTRUCTION SCHEDULE



Effective June 2013

OC BRIDGES PROGRAM MAP



● Lead Agency: City of Fullerton
 ● ● ● ● ● Lead Agency: Orange County Transportation Authority

Effective January 2011. Project area is approximate. Schedule is estimated and subject to change.